

Identification of leaf rust resistance genes in selected Argentinean bread wheat cultivars by gene postulation and molecular markers

Leonardo Sebastián Vanzetti^{§1} · Pablo Campos^{§2} · Melina Demichelis¹ · Lucio Andres Lombardo¹ · Paola Romina Aurelia¹ · Luis María Vaschetto¹ · Carlos Tomás Bainotti³ · Marcelo Helguera¹ ✉

1 Grupo de Biotecnología y Recursos Genéticos, INTA EEA Marcos Juárez, Córdoba, Argentina

2 Area Fitopatología, INTA EEA Bordenave, Buenos Aires, Argentina

3 Grupo Mejoramiento de Trigo, INTA EEA Marcos Juárez, Córdoba, Argentina

✉ Corresponding author: mhelguera@mjuarez.inta.gov.ar

[§]This authors equally contributed to this work.

Received August 11, 2010 / Accepted March 31, 2011

Published online: May 15, 2011

© 2011 by Pontificia Universidad Católica de Valparaíso, Chile

Abstract Leaf rust, caused by *Puccinia triticina* Eriks. is a common and widespread disease of bread wheat (*Triticum aestivum* L.), in Argentina. Host resistance is the most economical, effective and ecologically sustainable method of controlling the disease. Gene postulation helps to determine leaf rust resistance genes (*Lr* genes) that may be present in a large group of wheat germplasm. Additionally presence of *Lr* genes can be determined using associated molecular markers. The objective of this study was to identify *Lr* genes that condition leaf rust resistance in 66 wheat cultivars from Argentina. Twenty four differential lines with individual known leaf rust resistance genes were tested with 17 different pathotypes of leaf rust collected from Argentina. Leaf rust infection types produced on seedling plants of the 66 local cultivars were compared with the infection types produced by the same pathotypes on *Lr* differentials to postulate which seedling leaf rust genes were present. Presence of *Lr9*, *Lr10*, *Lr19*, *Lr20*, *Lr21*, *Lr24*, *Lr25*, *Lr26*, *Lr29*, *Lr34*, *Lr35*, *Lr37*, *Lr47* and *Lr51* was also determined using molecular markers. Eleven different *Lr* genes were postulated in the material: *Lr1*, *Lr3a*, *Lr3ka*, *Lr9*, *Lr10*, *Lr16*, *Lr17*, *Lr19*, *Lr24*, *Lr26*, *Lr41*. Presence of *Lr21*, *Lr25*, *Lr29*, and *Lr47* could not be determined with the seventeen pathotypes used in the study because all were avirulent to these genes. Eleven cultivars (16.7%) were resistant to all pathotypes used in the study and the remaining 55 (83.3%) showed virulent reaction against one or more local pathotypes. Cultivars with seedling resistance gene combinations including *Lr16* or single genes *Lr47* (detected with molecular marker), *Lr19* and *Lr41*, showed high levels of resistance against all pathotypes or most of them. On the opposite side, cultivars with seedling resistance genes *Lr1*, *Lr3a*, *Lr3a* + *Lr24*, *Lr10*, *Lr3a* + *Lr10*, *Lr3a* + *Lr10* + *Lr24* showed the highest number of virulent reactions against local pathotypes. Occurrence of adult plant resistance genes *Lr34*, *Lr35* and *Lr37* in local germplasm was evaluated using specific molecular markers confirming presence of *Lr34* and *Lr37*. Our data suggest that combinations including seedling resistance genes like *Lr16*, *Lr47*, *Lr19*, *Lr41*, *Lr21*, *Lr25* and *Lr29*, with adult plant resistance genes like *Lr34*, *SV2*, *Lr46* will probably provide durable and effective resistance to leaf rust in the region.

Keywords: genetic control of pathogens, molecular markers, plant breeding

INTRODUCTION

Leaf rust of bread wheat (*Triticum aestivum* L.), caused by the fungus *Puccinia triticina* Eriks. is one of the most common foliar diseases of this crop worldwide (Oelke and Kolmer, 2004; Mebrate et al. 2008). In South America, leaf rust occurs annually in approximately 9 million ha of wheat, causing yield losses of over 50% in severe epidemics and is the primary reason of cultivar replacement. Considering the large areas sown to cultivars that require chemical control in an average epidemic (a very high proportion of the wheat area in the Southern Cone is planted with susceptible or moderately

susceptible cultivars), the total annual cost of fungicide applications to control leaf rust in the region is about US\$50 million (Germán et al. 2007).

The use of resistant cultivars offers the most effective and ecologically sustainable method of control of the disease, therefore, incorporating genetic resistance to this pathogen into adapted germplasm is a major goal in most wheat breeding programs.

Plant disease resistance can be classified into two categories: qualitative resistance, conferred by a single resistance gene (also termed as major, seedling, or race specific resistance) and quantitative resistance, mediated by multiple genes or quantitative trait loci (QTLs) (also termed as adult plant, race non-specific or slow rusting resistance) with each providing a partial increase in resistance (Kou and Wang, 2010). More than sixty genes for leaf rust resistance (*Lr*), most of them major, seedling or race specific genes, have been catalogued to date in wheat (McIntosh et al. 2008; Samsampour et al. 2010). However, the gene-for-gene interaction between host resistance genes and pathogen virulence genes combined by virulence shifts in pathogen populations have reduced the effectiveness of a significant number of major leaf rust resistance genes (Johnson, 2000; Bulos et al. 2006). Replacement of highly variable land races by higher yielding, pure-line varieties in many parts of the world, including the South Cone, has further reduced the wheat gene pool and favored virulence shifts events in pathogen populations.

In this context, a better knowledge on the identity of effective *Lr* genes present in adapted cultivars that can be used as donors of resistance in wheat breeding programs could greatly improve the efficiency of developing resistant cultivars by using these genes *per se* or by stacking different resistant genes in a given cultivar, a process also known as gene pyramiding (Messmer et al. 2000); thereby helping to avoid the release of cultivars that are genetically uniform (Mebrate et al. 2008).

Before gene pyramiding is practiced, it is advisable to identify effective and genetically different sources of resistance. Gene postulation is the most frequent method to determine the presence of the probable race-specific seedling resistance genes (*Lr* genes) in a host cultivar, many researchers have used this method to for identifying *Lr* genes in a group of wheat genotypes (Kolmer, 2003; Oelke and Kolmer, 2004; Wamishe and Milus, 2004; Hysing et al. 2006; Mebrate et al. 2008). In this procedure, a host cultivar is evaluated against a collection of *Puccinia triticina* Eriks. Isolates carrying different avirulence/virulence gene combinations (pathotypes) on the basis of phenotypic expressions in the form of infection types (ITs). Infection types produced on a series of differential genotypes carrying individual *Lr* resistant genes are the basis for comparing the ITs of wheat cultivars with unidentified genes for leaf rust resistance. Gene postulation can be complicated by interactions between resistance genes and it is better suited for resistance genes that are expressed at seedling stage (qualitative resistance genes) than at adult plant (in general, quantitative resistance genes). Certain adult plant resistance genes like *Lr34* and *Lr46* are very important for breeding because they proved to confer durable resistance over a long period of time in different environments, as well as against diverse pathotypes of the fungus (Schnurbusch et al. 2004).

Alternatively to gene postulation, presence of *Lr* genes can be determined by testing host cultivars with molecular markers linked to resistance genes. This approach overcomes some of the problems associated with traditional gene postulation, such as gene interactions and plant stage of gene expression. Recently there have been advances in the mapping (and development of molecular markers) of several leaf rust resistance genes (Helguera et al. 2000; Prins et al. 2001; Helguera et al. 2003, Helguera et al. 2005; Gupta et al. 2006; Lagudah et al. 2006; Bansal et al. 2008; Mebrate et al. 2008; Kuraparthi et al. 2009; Sun et al. 2009; Samsampour et al. 2010). Once these genetic factors are mapped, they can be controlled by molecular markers and the corresponding genotypes of individuals can be assessed easily. As a consequence, the identification of cultivars carrying favourable alleles at these loci will provide valuable genetic material for the development of new improved varieties.

The objective of this study was to identify *Lr* genes that condition leaf rust resistance in 66 bread wheat cultivars from Argentina using gene postulation and molecular markers.

Table 1. Seedling infection types* of differential lines with different leaf rust resistance genes tested against 17 pathotypes.**

Line/cultivar	Gene	MDT	MFP	MFR	MFT	MDR	MCP	MCP	CHT	MBJ	MFR	MRN	TDP	MFP	TNR	MGT	SNG	MLD	MFR
		10-20	20	10-20	10-20	10-20	10	10-19		10-20	10	10	10-20	10	20	10	10	10	10
Centenario/6*Thatcher	1	4	4	4	4	4	4	4	0	4	4	4	4	4	4	4	4	4	4
Webster/6*Thatcher	2a	0;	;	;	;	0;	;	0;	;	;	;	0;	4	0	4	;	4	0	;
Thatcher*6/Loros	2c	11+	;1	11+	1	1	;1	1	;1	1	;N	1	4	;1	4	;1	4	;1	;N
Democrat/6*Thatcher	3a	4	4	4	4	4	4	4	4	4	4	4	4	4	4	4	;1	4	4
K.Aniversario/6*Thatcher	3ka	4	4	3+4	4	4	4	4	2	2	4	4	4	4	4	4	2	2	4
Thatcher*6/Transfer	9	0;	0;	0	;	;	0;	0;	0	0;	0	4	0;	0;	4	0;	4	3+	0
Exchange/6*Thatcher	10	4	2=	3+4	3	4	4	4	;1	4	4	4	4	4	;1	4	4	3	4
Hussar(W976)	11	4	2	4	4	4	2-	3	4	4	4	2	2	2	4	4	4	2	4
Selkirk/6*Thatcher	14a	4	4	4	4	4	4	3+	4	4	4	4	2	4	4	4	4	2	4
Exchange/6*Thatcher	16	1+	1+	1+	11+	1N	1+(3)	1++2	4	1++2	1+N	4	1+2N	1+	1+	3	1++	1++(2++)	1+N
Klein Lucero/6*Thatcher	17	4	4	1+	4	;1	4	4	4	3+4	12=	4	4	4	;	4	1	3+4	12=
Thatcher*7/Africa43	18	2	2	33-	2	2+	33+	3+4	2	22-	4	2	2	2	2	1+	4	2-	4
Tc*6/Agatha	19	0	0;	0;	0;	0;	;	4	0;	0	;	;	0;	0	0	0	;	;	;
Thew	20	4	4	4	4	4	;1N	;1N	;1N	3	;1N	;1N	4	;1N	2++3	;1N	;1N	;1N	;1N
Thatcher*6/RI5406	21	2	2	2-	2	2	2-	2	2+	2-	2-	2	22-	2	;1	2	2	2	2-
LeeFL310/6*Thatcher	23	4	33+	4	4	4	22+	2	4	22-	4	**	4	4	3+4	2	4	2	4
Agent	24	4	3+4	4	3	3+	0;	;	;1	0;	4	;	4	3	3+4	;1	4	;	4
Thatcher*7/Transec	25	;1	1	1	;1	;1	;1	00;	;	;1	;1	0;	1N	;1	;1	;1	1	;1	;1
Prointa Pigué	26	2=	3	4	33+	2	4	4	4	2	4	4	1++	4	2	2	22+	2	4
Gatcher (27+31+10)	27+31	4	X-2=	4	4	4	4	X	;1	3+	4	;1	4	4	;	4	3	X	4
Thatcher*6/CS7DAg#11	29	11+	11+	1+	1	1	;1	;1	1	;	1N	;1	1N	1	11+	;1	22-	;1	1N
Tam107*3/TA2460	41	0	0;	0	0	0	0;	0	0	0	0	4	0	0	4	0	0	NT	0
BIOINTA 2004	47	;	0;	0;	11+	;1	0;	;	;	;1	0;	0;	;	;	0	;	0;	0;	0;
UC1037*6/Neepawa*6/ <i>T. spelotides</i> F-7-3	51	3	3	2-	3+	1++	;1	;	0	;1	1++	0	2++	22+	1++	0;	;1	NT	1++

* '0'= no visible uredia; '1'= hypersensitive flecks; '1'= small uredia with necrosis; '2'= small to moderate size uredia with green islands and surrounded by necrosis or chlorosis; '3'= moderate size uredia with or without chlorosis; '4'= Large uredia without chlorosis; 'N'= necrosis. Symbols '-', '+' and '++' denote smaller or larger uredinia. The most common infection is listed first. For example, 11+ indicates infection types of 1 and 1+. NT= not tested. **Pathotypes nomenclature based on Long and Kolmer (1989) with additional virulence over Lr10 and/or Lr20.

MATERIALS AND METHODS

Plant material

A set of 66 bread wheat cultivars registered in Argentina were used to identify *Lr* genes with molecular markers and/or traditional gene postulation. Seed stocks were obtained from Instituto Nacional de Tecnología Agropecuaria (INTA) Marcos Juárez Wheat Germplasm Bank (Marcos Juárez, Argentina).

Sixteen near isogenic lines of Thatcher that differ for single leaf rust resistance genes and eight wheat cultivars and breeding lines with known leaf rust resistance genes were used as controls for molecular markers and/or traditional gene postulation studies (McIntosh et al. 1995, Table 1). Additionally, differential lines carrying adult plant resistance *Lr* genes 'VPM1' (*Lr37+*), 'Lalbahadur + *Lr34*' (*Lr34* has been transferred from Parula7D) and 'Thatcher*6/RL5711' (*Lr35+*) were used as controls for molecular markers.

Tests for *P. triticina* resistance (gene postulation studies)

At least eight plants from 66 common wheat cultivars from Argentina and 24 differential lines carrying single *Lr* genes (Table 1) were evaluated for seedling resistance to leaf rust at the Cereal Disease Laboratory in INTA Bordenave during 2008. Plants were grown in a greenhouse set at 18 to 22°C with natural day light. Seedlings were inoculated with leaf rust pathotypes MDT 10-20, MFP 20, MFR 10-20, MFT 10-20, MDR 10-20, MCP 10, MCP 10-19, CHT, MBJ 10-20, MFR 10, MRN 10, TDP 10-20, MFP 10, TNR 20, MGT 10, SNG 10 and MLD 10, which are the most common isolates in Argentina. Seedlings were inoculated at 8 days after planting, when the primary leaves were fully extended. For each pathotype, an oil-spore mixture was atomized onto the seedling and seedlings were incubated in a dew chamber for 18 hrs with no light at 18-22°C. After incubation, the plants were placed in a greenhouse set at 18-22°C. Infection types were scored (first and second leaf) 14 days after inoculation using a scale of 0-4 according to Stakman et al. (1962). Pathotypes designations were according to the North American nomenclature described in Long and Kolmer (1989) with additional virulence over *Lr10* or *Lr20* genes.

DNA extraction

Genomic DNA was extracted from fresh leaves of single plants using a fast, small-scale DNA isolation procedure based on Helguera et al. (2005).

Detection of *Lr* genes with molecular markers

Molecular markers for fifteen different *Lr* genes were included in this study. Primer names, sequences, annealing temperatures, expected product sizes and original references from *Lr* gene associated markers are detailed in Table 2.

In all cases, Polymerase Chain Reaction (PCR) reactions were performed in 25 µl aliquots in a PTC-100 (MJ Research) thermal cycler. The reaction buffer contained 100 ng of genomic DNA (template), 1X *Taq* polymerase buffer (Promega Corp. Madison, WI), 1.0 U *Taq* DNA polymerase (Promega), 0.2 mM of each deoxynucleotide, 0.2 µM of each primer and 1.5 mM of MgCl₂. Forty cycles of 45 seconds at 94°C, 45 sec at 55-65°C depending on the primer combination (Table 2) and 1 min at 72°C were performed, followed by a final elongation step of 10 min at 72°C. After that, PCR reactions (10 µl each) were run on 2% agarose (Promega) gel in SB buffer at constant power (100 V) for about 30 min. In the case of markers for *Lr37* and *Lr51* PCR products (10 µl) were digested with restriction enzymes *Dpn* II and *Pst* I, respectively, and later electrophoresed. After electrophoresis the gels were stained with ethidium bromide (0.5 g/L) and visualized with Ultra Violet (UV) light.

Table 2. Primer name, sequences, PCR annealing temperature, expected product size and references from *Lr* gene associated markers used in this study.

Gene	Name	Primer sequences (5'-3')	Annealing temp. (°C)	Product size (bp)	Reference
<i>Lr9</i>	J13/1	TCCTTTTATTCGCACGCCGG	55	1110	Schachermayr et al. 1994
	J13/2	CCACATACCCAAAGAGACG			
<i>Lr10</i>	Lrk10D1	GAAGCCCTTCGTCTCATCTG	55	282	Schachermayr et al. 1997
	Lrk10D2	TTGATTCATTGCAGATGAGATCACG			
<i>Lr19</i>	GbF	CATCCTTGGGGACCTC	60	130	Prins et al. 2001
	GbR	CCAGCTCGCATACATCCA			
<i>Lr20</i>	STS638-L	GCGGTGACTACACAGCGATGAAGCAATGAAA	60	542	Neu et al. 2002
	STS638-R	GCGGTGACTAGTCCAGTTGGTTGATGGAAT			
<i>Lr21</i>	F	CCAAAGAGCATCCATGGTGT	54	885	Huang and Gill, 2001
	R	CGCTTTTACCGAGATTGGTC			
<i>Lr24</i>	J09-1	TCTAGTCTGTACATGGGGGC	55	350	Schachermayr et al. 1995
	J09-2	TGGCATGAACTCCATACG			
<i>Lr25</i>	Lr25F20	CCACCCAGAGTATACCAGAG	50	1800	Procnier et al. 1995
	Lr25F19	CCACCCAGAGCTCATAGAA			
<i>Lr26</i>	IB-267L	GCAAGTAAGCAGCTTGATTTAGC	55	267	Mago et al. 2002
	IB-267R	AATGGATGTCCCAGTGAGTGG			
<i>Lr29</i>	Lr29F24	GTGACCTCAGGCAATGCACACAGT	55	900	Procnier et al. 1995
	Lr29R24	GTGACCTCAGAACCGATGTCCATC			
<i>Lr34</i>	csLV34F	GTTGGTTAAGACTGGTGATGG	55	150	Lagudah et al. 2006
	csLV34R	TGCTTGCTATTGCTGAATAGT			
<i>Lr35</i>	Lr35F	AGAGAGAGTAGAAGAGCTGC	55	900	Gold et al. 1999
	Lr35R	AGAGAGAGAGCATCCACC			
<i>Lr37</i>	URIC	GGTCGCCCTGGCTTGCACCT	60	285	Helguera et al. 2003
	LN2	TGCAGCTACAGCAGTATGTACACAAAA			
<i>Lr47</i>	PS10L	TCTTCATGCCCGGTGGGT	60	224	Helguera et al. 2000
	PS10L2	GGGCAGGCGTTTATTCCAG			
	PCAPSR	CGTGAGACTCGCCGTTACCTTG			
<i>Lr51</i>	S30-13L	GCATCAACAAGATATTCGTTATGACC	52	422 + 397	Helguera et al. 2005
	AGA7-759R	TGGCTGCTCAGAAAAGTGGACC			

RESULTS

Seedling resistance by gene postulation

The infection types (ITs) of the 17 *P. triticina* pathotypes to 24 differential lines are listed in Table 1. Table 3 presents the ITs of wheat cultivars considering the same 17 *P. triticina* pathotypes used to infect the 24 differential lines. The ITs of the cultivars and the differential lines to the different *P. triticina* pathotypes determined the gene postulations (Table 3, Column 2). Eleven different *Lr* genes were postulated in the material: *Lr1*, *Lr3a*, *Lr3ka*, *Lr9*, *Lr10*, *Lr16*, *Lr17*, *Lr19*, *Lr24*, *Lr26*, *Lr41*. Presence of *Lr21*, *Lr25*, *Lr29*, and *Lr47* could not be determined with the seventeen pathotypes used in the study because all were avirulent to these genes (to date, no virulent pathotypes against *Lr21*, *Lr25*, *Lr29*, and *Lr47* have been detected in Argentina). Of the 66 tested cultivars, one cultivar had no detectable seedling resistance (Baguette 21) and 50 cultivars had one or more known *Lr* genes including 42 cultivars that also had one or more unidentified *Lr* genes. The fifteen remaining cultivars exhibited ITs patterns not corresponding to the 24 differential lines and/or combinations, and were postulated to carry only unidentified *Lr* genes (Table 3). Eleven cultivars (16.7%) were resistant to all pathotypes used in the study and the remaining 55 (83.3%) showed virulent reaction against one or more local pathotypes. Between the eleven resistant cultivars, ACA 302, ACA 303, ACA 304, ACA 315, Klein Gavilán, Buck Glutino, Themix-L, Buck Ranquel and Klein Jabalí, were postulated to have *Lr16* because they had a low IT of 0-2, but preferably 1 with large uredinia (typical of *Lr16*), in MDT 10-20, MFP 20, MFR 10-20, MFT 10-20, MDR 10-20, MCP 10, MCP 10-19, MBJ 10-20, MFR 10 TDP 10-20, MFP 10, TNR 20, SNG 10 and MLD 10). Additionally in these cultivars, low ITs in CHT, MRN 10 and MGT 10 were explained by: presence of *Lr3a* + *Lr24* + *Lr26* (Klein Gavilán); *Lr10* and unknown *Lr* genes (ACA 302, ACA 303, ACA 304, Themix-L); *Lr10* + *Lr26* + unknown *Lr* genes (Buck Ranquel); *Lr3a* + *Lr10* + unknown *Lr* genes (ACA 315); *Lr3a* + *Lr26* + unknown *Lr* genes (Buck Glutino); unknown *Lr* genes (Klein Jabalí) (Table 3). Buck Mataco had also low IT (of ; to 22+) to all pathotypes which was explained by presence of *Lr3a* + *Lr10* + *Lr17* associated with additional unknown *Lr* genes. As mentioned before, *Lr* genes 21, 25, 29, and *Lr47* showed also low infection types to all tested pathotypes, however none of the ten resistant cultivars described before showed the typical low ITs of 0; to ; associated with *Lr47* (observed in BIOINTA 2004) or ITs of 2, associated with *Lr21*, therefore, presence of these *Lr* genes was discarded. *Lr25* and *Lr29* showed ITs more similar to previous resistant cultivars (mostly 1, Table 1), therefore, presence of these genes cannot be discarded by gene postulation. In these cases, the use of *Lr* genes diagnostic markers can be a valuable tool to complement gene postulation data. Procuñier et al. (1995) developed PCR markers diagnostic for *Lr25* and *Lr29* which were used in our study and confirmed that none of the selected local cultivars had these sources of leaf rust resistance (Table 4).

In the remaining 56 susceptible cultivars, a high variation in the ITs responses to the 17 pathotypes was observed, defined by the number of virulent reactions per cultivar, which varied between 1 and 17. In general, combination of seedling resistance genes including *Lr19*, *Lr41*, *Lr9*, *Lr16*, *Lr26*, *Lr10*, *Lr3a*, *Lr16* + 10, *Lr16* + 26, *Lr16* + 26 + 10, *Lr16* + *Lr17*, *Lr16* + *Lr10* + *Lr3a*, *Lr16* + *Lr26* + *Lr17* + *Lr3a*, *Lr26* + *Lr3a*, *Lr26* + *Lr10* + *Lr3a*, *Lr26* + *Lr10* + *Lr24*, *Lr26* + *Lr10* + *Lr24* + *Lr3a*, frequently with additional unknown genes, were detected in cultivars with virulent reactions (high ITs) against one, two or three pathotypes and avirulent reactions (low ITs) against complementary pathotypes (for example, Buck Norteño, Klein Sagitario, Buck Brasil, Buck Guapo, BIOINTA 1001, Klein Zorro, BIOINTA 3004, Buck Sureño, Buck Arriero, Buck Pingo, Buck Baqueano, Klein Guerrero, Klein Escudo, Buck Malevo, Buck Puelche) (Table 3). In contrast with previous situation, cultivars with a higher number of virulent reactions (high ITs) against local pathotypes (eight or more) were associated with presence of a different set of *Lr* genes including *Lr1*, *Lr3a*, *Lr3a* + *Lr24*, *Lr10*, *Lr3a* + *Lr10*, *Lr3a* + *Lr10* + *Lr24*, also frequently in combination with additional unknown genes (for example, ACA 801, Baguette 10, Klein Flecha, Buck Pronto, BIOINTA 1003, Baguette P. 13, Buck Guatimozin, Baguette 20).

Identification of leaf rust resistance genes using molecular markers

An important field in which molecular markers are used in wheat resistance breeding is the determination of designated resistance genes in genotypes where the genetic background has not yet been clarified, like most commercial cultivars. Using this approach we screened the set of 66 adapted cultivars previously evaluated by gene postulation for presence of 15 *Lr* genes (Table 2), and eight genes were detected: six seedling genes (*Lr9*, *Lr10*, *Lr19*, *Lr24*, *Lr26*, *Lr47*) and two adult plant resistance genes (*Lr34*, *Lr37*). Genes *Lr20*, *Lr21*, *Lr25*, *Lr29*, *Lr35* (adult plant resistance gene) and *Lr51* were not detected in tested cultivars (Table 4).

Table 3. Postulated genes and seedling infection types* in common wheat cultivars from Argentina tested with 17 pathotypes.**

Cultivar	Year of Release	Postulated Lr Genes	Pathotypes																
			MDT 10-20	MFP 20	MFR 10-20	MFT 10-20	MDR 10-20	MCP 10	MCP 10-19	CHT	MBJ 10-20	MFR 10	MRN 10	TDP 10-20	MFP 10	TNR 20	MGT 10	SNG 10	MLD 10
ACA 201	2007	10+u	4	;	4	3	1++ 2N	2=	2=	2-	;	22-	;	2=	2=	0;	4	2	2=
ACA 302	2001	10+16+u	1	;	;1	;1	1	;1	0;	0;	1++ 2N	;1N	;1	;	1	;	1+	1	2=
ACA 303	2001	10+16+u	1++	;1	1++	1+ 1++	1	1	11+	;	1++2	1+ 1++	2-	1	;1	0	2	11+	11+
ACA 304	2004	10+16+u	1++	;1	1N	1++	1	;1	11+	;	1+2	;1N	;1	1	1	0	2N	11+	2=
ACA 315	2006	3a+10+16+u	1	1++	1+	1+ 1++	1++ 2N	1+	1++ 2N	11+	1++	;1	1++	1+	1+ 1++	1++	2N	;1	2N
ACA 801	2002	3a	4	4	3+4	4	4	4	4	4	4	33+	4	4	4	4	3	;1	4
ACA 901	2006	u	4	4	4	33+	4	11+	0	0;	22-	4	4	4	4	4	NT	NT	3+
Baguette 10	2000	3a+u	4	4	4	4	33+	4	4	4	3+	2+	4	4	4	3+	4	;	4
Baguette 19	2004	u	3+4	2=	4	4	3+4	1+	X	0;	4	4	11+	2=	;1	4	4	33+	2++
Baguette 20	2003	3a+10+u	4	2-	4	4	3	1	1+	;	2	;1	4	4	4	1+	2=	;	33+
Baguette 21	2005	u	4	4	4	4	4	4	4	4	4	4	4	4	4	3	4	4	3+4
Baguette 9	2007	u	4	2+ 2++	4	4	4	1+ 1++	3+	;1	1++	4	2	4	4	4	;1	;1	NT
Baguette P. 11	2003	u	4	33+	11+	3	2+ 2++	4	4	22-	33+	2iv	4	4	4	2-	4	3-	3+4
Baguette P. 13	2004	3a+u	4	3	4	3+	33+	11+	1	2	;1	4	2	4	4	33+	1+	0;	22+
BIOINTA 1000	2003	9+u	;	;	0;	;	;	;	0	0;	0;	0;	4	0;	;	0;	4	4	4
BIOINTA 1001	2005	3a+26+u	;1	1	11+	2+ 2++	;	1++	3	0;	1	2	2-	;	1++ 2N	0;	22-	;	;1
BIOINTA 1002	2005	u	3+	2=	2	3	2-	;	1	1	1+	2	;1	4	2-	1++	;1	1N	1++
BIOINTA 1003	2005	3a+24	4	3+	4	4	33+	;1	;1	1	0;	3	;	4	4	33+	0;	;1	;1
BIOINTA 1004	2005	3a+10+24+u	4	1N	4	3	4	;	;	0;	;	1++ 2N	;1	4	33-	;	0;	;N	;
BIOINTA 1005	2007	u	4	3-	4	3+4	4	4	;1	;1	33+	4	X	4	4	NT	3	X	X-
BIOINTA 2001 B	2003	10+u	4	1	2	3-	2-	2-	22-	;	2	2-	1	2=	2=	0	4	1++2	2+ 2++
BIOINTA 2002	2005	u	3	;1	3	3+	4	22-	3-	0;	2+	4	2-	2=	2	;	4	4	3+4
BIOINTA 2004	2007	u	;	0;	0;	11+	;1	0;	;	;	;1	0;	0;	;	;	0	;	0;	0;
BIOINTA 3000	2003	u	1++	3+4	2N	33+	2N	3+	;1	;	33+	;1	3	2+	33+	2	33-	1++	4
BIOINTA 3003	2003	u	0	;	0	0;	;	0	0	0;	0	0;	;	0;	0	4	0	0;	0;
BIOINTA 3004	2005	3a+24+26+u	1+1++	1N	1++ 2N	2-2=	1++	;1	;	0;	;	1++	0;	1N	4	0;	0;	1	;1

Buck Arriero	1997	16+u	1++	2	2N	1++ 2N	1	2-	;1	NT	3+	1N	0;	2=	2	1+ 1++	3	NT	;1	
Buck Baqueano	2007	3a+10+26+u	1N	;1	4	3+	2	;	0;	0;	;1	11+	;	;	2-	0;	;N1	;1	;	
Buck Biguá	2001	u	4	4	3	4	4	;1	0;	;1	22+	2	2iv	4	4	4	1	;	3+4	
Buck Brasil	2000	16+17+u	1++	;1	1++	1N	;1	1	1+	;	2++3	;1	11+	1++	1+	;	1++ 2N	1N	2N	
Buck Chacarero	2005	10+u	4	+	3+4	3+4	2	11+	;1	;	3-	;1N	1	;1	2-	;	4	22-	1++ 2N	
Buck Glutino	2007	3a+16+26+u	1+1++	1+	1	11+	;1	;1	;1	0;	1++ 2N	NT	;	0;	11+	1+	;1	;	1+	
Buck Guapo	1999	3a+16+17+26+u	;1	2=	1N	1+	0;	1+2	2=	4	1	0;	1	;	2=	0;	2N	0;	1	
Buck Guatimozín	2001	3a+24	4	3+4	4	4	X+	;1	1++	1	0	33+	0;	4	4	4	0;	;	0;	
Buck Malevo	2006	10+24+26+u	2-	;1	3	33+	2	0;	0;	0;	0	2++3	0;	;N	2=	;	0;	2+	;1	
Buck Mataco	2002	3a+10+17+u	22-	;	1+	2-	1	;	2	;	22+	11+	;1	;1	0;1	0;	;1	0;	;1	
Buck Mejorpan	2003	3a+u	3	2=	22-	3-	2	;1	22-	4	2=	2	;	;1	2-	2+	4	;	2-	
Buck Norteño	2006	3a+10+16	1N	;	2-	1++ 2N	1+	11+	1N	;	;1	;1N	;	;	;N1	0;	3	;	;	
Buck Panadero	1997	u	4	2=	2	33-	2-	;1	2	4	4	;1	;1	2=	2=	3	;	2-	1++2	
Buck Pingo	2001	3ka+10+16	11+	1N	1	1+	1+N	33+	11+	1+	2-	1++ 2N	1++	1++ 2N	;1	33+	1N	1++ 2N	1++ 2N	
Buck Pronto	1996	1+u	3+4	22-	3	3+	3+	2-	1	0;	2-	4	3	4	4	4	;1	33+	33+	
Buck Puelche	2007	3a+10+24+26+u	1N	;	4	3	1++ 2N	0	0	0;	0	2N	;	1	3-	0;	0;	0;	;1	
Buck Ranquel	2007	10+16+26+u	1++	1N	22+	22-	2	1+ 1++	;1	0;	2-	1+	;	;1	1N	2=	2+	1	;	
Buck Sureño	1999	3a+16+26+u	22-	22-	2=	2-	1	2-	1+	4	;	;1N	0;	;	22-	2-	3-	0;	;	
Caudillo	1997	10+u	4	;N	22+	33+	2	;	22-	;	22-	;1N	11+	;1	2-	;1	4	2-	2	
Cronox	2005	10+24+u	4	;1	4	4	4	;	0	0;	;	2	0	4	3+	;	0;	3+	0;	
Themix-L	2005	10+16+u	1N+	11+	1++ 2N	1++	1++	1++	1++	1+	1+	1++	0;1	1++	1++	1++	;	1++ 2N	1++	1++
Onix	2007	3a+10+u	4	0;	4	4	4	;	;1	0;	1	3	;	2-	2	;1	1+	0;	;1	
INIA Churrinche	2001	10+24+u	4	1	4	33+	4	;1	0;	0;	0;	1++ 2N	;	4	4	;	0;	1N	1	
INIA Condor	2004	u	4	3+4	4	3+	3+	;1	0;	0;	0;	22+	;	4	4	33+	;1	4	;1	
INIA Torcaza	2004	10+24+u	1+	1+ 1++	4	1++	3+	;	0;	;	0;	2-	0;	1	1	;	0;	3	;	
Klein Carpincho	2007	3a+u	1N	;	1++	3	X+	;	;	;1	1++	2-	;	2=	2-	0;	2-	0;	;	
Klein Castor	2005	3a	1+1++	;1	2	33-	1	1+	1+	3	;1	;1	;1	;1	2-	2iv	;1	;1	;1	
Klein Chajá	2001	17+u	1++	3+	1++ 2N	1++ 2N	1+	33+	;	X+	2++3	1++	3+4	2	2N	2N	22-	1++2	33+	

Klein Escudo	1999	26+u	11+	1++2	2++3	2	;1	2	2	3+	2	2-	2-	;1	2-	2	4	1	11+	
Klein Flecha	2003	1+u	4	4	22+	4	4	4	4	0;	4	3+4	4	4	4	4	4	4	NT	4
Klein Gavilán	2004	3a+16+24+26	1	2	1+	1++	1	0;	0	0;	;	;1N	0;	1	2	2=	0;	0;	;	
Klein Guerrero	2007	26+u	11+	;1	2	33-	22+N	2-	;1	0;	1++	3	;1	0;	2=	NT	2=	2-	;11+	
Klein Jabalí	2002	16+u	1+	1++ 2N	1	1++	1++N	22+	1+	NT	1++ 2N	;1	1++	1++	1N	1++	1++	1++	2++	
Klein Proteo	2003	3a+10+u	4	1N	1++2	4	22+	;1N	2	;N	3	1N	11+	1	1	1	X	0;	1+	
Klein Sagitario	1999	16+26+u	11+	1	1++	1+	1	11+	11+	2++3	2=	1++	0;	;1	;1	1+	2N	NT	;1	
Klein Tauro	2005	u	NT	;1	2	33+	2-	;1	X	3+	2+	;	2-	2=	2=	3	33-	2-	22-	
Klein Zorro	2006	3a+26+u	11+	22+	;	4	2-	0;1	;1	1+	2=	0;	2	;1	22+	;1	;N	;	1++	
ProINTA Gaucho	1999	19	0	0;	0;	0;	0	0;	3+	1	0;	0	0	0	0	0;	0	0	0;	
Sirirí	2005	u	4	4	4	4	4	;1	2=	3-	1	33+	3-	4	4	33+	1	4	22+	
SRM Nogal	2006	41	0;	;	0;	;1	0	;	0	0;	;	0	3	1	11+	3	0	0;	1+2	

'0'= no visible uredia; ';'= hypersensitive flecks; '1'= small uredia with necrosis; '2'= small to moderate size uredia with green islands and surrounded by necrosis or chlorosis; '3'= moderate size uredia with or without chlorosis; '4'= Large uredia without chlorosis; 'N'= necrosis; 'X'= Heterogeneous. '-', '+' and '++' denote smaller or larger uredinia. Most common infection is listed first. For example, 11+ indicates infection types of 1 and 1+. NT= not tested.

Seedling resistance genes detected in adapted cultivars using molecular markers

The diagnostic PCR fragment associated with *Lr9*, was detected only in BIOINTA 1000 and in the differential line 'Thatcher*6/Transfer' (Table 4). Gene postulation studies showed thirteen leaf rust pathotypes with avirulence to *Lr9*, and only four pathotypes with virulent reaction (SNG 10, MLD 10, MRN 10 and TNR 20, Table 1). Despite its low frequency in local wheat cultivars, the wide range of effectiveness positioned *Lr9* as a useful source of resistance when deployed in combination with complementary *Lr* genes like *Lr51*, *Lr21*, etc. *Lr9*, derived from *Triticum umbellulata*, has also been detected in low frequency in some European countries and in the USA (Urbanovich et al. 2006; Kolmer et al. 2007a).

Table 4. *Lr* genes detected with PCR based markers in common wheat cultivars from Argentina.

<i>Lr</i> Genes	Cultivars
<i>Lr9</i>	BIOINTA 1000
<i>Lr10</i>	ACA 201, ACA302, ACA303, ACA304, ACA 315, Baguette 20, BIOINTA Bonaerense 2001, Buck Chacarero, Buck Glutino, Buck Mataco, Buck Norteño, Buck Pingo, Buck Sureño, Caudillo, Onix, Themix-L, Klein Proteo
<i>Lr20</i>	not detected
<i>Lr21</i>	not detected
<i>Lr24</i>	Buck Guatimozín
<i>Lr25</i>	not detected
<i>Lr26</i>	BIOINTA 1001, Buck Guapo, Klein Escudo, Klein Zorro
<i>Lr29</i>	not detected
<i>Lr34</i>	ACA 801, Klein Castor
<i>Lr35</i>	not detected
<i>Lr37</i>	Baguette 10, Baguette Premium 11
<i>Lr51</i>	not detected
<i>Lr10 + Lr24</i>	BIOINTA 1004, INIA Churrinche, INIA Torcaza, Cronox
<i>Lr10 + Lr26</i>	Buck Baqueano, Buck Ranquel
<i>Lr10+ Lr34</i>	Buck Arriero
<i>Lr19 + Lr26</i>	ProINTA Gaucho
<i>Lr24 + Lr26</i>	BIOINTA 3004, Klein Gavilán
<i>Lr24 + Lr34</i>	BIOINTA 1003
<i>Lr26 + Lr34</i>	INIA Condor, Klein Guerrero, Klein Sagitario, Klein Tauro
<i>Lr34 + Lr47</i>	BIOINTA 2004
<i>Lr10 + Lr24 + Lr26</i>	Buck Malevo, Buck Puelche

Lr10 is a *T. aestivum* L. gene located in the short arm of chromosome 1A. Schachermayr et al. (1997) developed a diagnostic marker amplifying a 282-bp fragment associated with the presence of *Lr10* (Figure 1). Using this marker, we detected the diagnostic fragment in 23 local cultivars (34%) (Table 4). Gene postulation studies using 'Exchange/6*Thatcher' differential line showed avirulent reaction with MFP 20, CHT and TNR 20 and virulent reaction with the remaining 14 pathotypes (Table 1). This data positionate *Lr10* as of limited usefulness in agriculture because of its narrow range of effectiveness. *Lr10* is the first cloned resistance gene in wheat, its sequence encodes a CC-NBS-LRR type of protein with similarities to RPM1 in *Arabidopsis thaliana* and to resistance gene analogs in rice and barley (Feuillet et al. 2003).

The *Lr19* gene was introgressed to the hexaploid wheat from *Agropyron elongatum*, into the wheat substitution line 'Agrus' (McIntosh et al. 1995). We detected the *Lr19* diagnostic fragment in 'Thatcher*7/Translocation 4' differential line and in only one local cultivar ('ProINTA Gaucho') between

66 tested cultivars (Table 4). Molecular data was confirmed by gene postulation studies, *Lr19* avirulent reaction in 16 pathotypes and virulent reaction in only MCP-10-19 was present in Thatcher*7/Translocation 4' differential line and in ProINTA Gaucho (Table 1, Table 3). *Lr19* in combination with other major leaf rust resistant gene like *Lr51*, can be an effective source of resistance against leaf rust, however, a special attention must be taken when using this gene in breeding because the alien chromosome segment carrying *Lr19* is associated with undesirable yellow pigment in flour (Zhang et al. 2005).

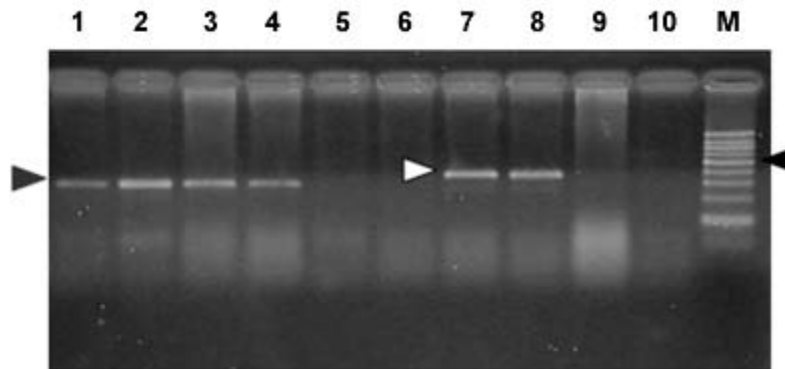


Fig. 1 PCR products obtained from wheat genomic DNAs amplified using Lrk10D1/Lrk10D2 primers. Lanes 1 to 10 are: 1- Exchange/6*Thatcher, 2-ACA302, 3-Buck Baqueano, 4-Buck Chacarero, 5-ACA 801, 6-ACA 223, 7-Baguette 10, 8-Baguette Premium 11, 9-BIOINTA 1002, 10-BIOINTA 1003. M- DNA size standard (100-pb ladder, Biodynamics), 500-bp fragment is indicated with a black arrowhead. The grey arrowhead indicates the 282-bp fragment associated with presence of *Lr10*. The 362-bp fragment (white arrowhead) and the absence of PCR product are associated with absence of *Lr10*.

Presence of *Lr24* was detected by PCR markers developed by Schachermayr et al. (1995) in ten cultivars between 66 (Figure 2, Table 4). Additional sources of *Lr24* with a smaller chromosomal segment that is not detected with the marker used in our study have been reported (Schachermayr et al. 1995; Prabhu et al. 2004), therefore we cannot discard presence of additional cultivars carrying the smaller translocation carrying *Lr24*. Gene postulation studies showed 7 pathotypes with avirulent reaction and 10 with virulent reaction (Table 1) and positionate *Lr24* as a moderately useful source of resistance when deployed in combination with complementary *Lr* genes like *Lr19*, *Lr21*, etc. The gene *Lr24*, derived from *Agropyron elongatum*, has also been used in hard red and soft red winter wheats from USA (Kolmer et al. 2007a).

The source of the *Lr26* resistance is hybrid derivatives of cultivated wheat and rye cv. 'Petkus' with a chromosomal translocation 1BL/1RS, which were produced in the 1930s in Germany. The good level of resistance against leaf rust (as well as resistance to stripe and stem rusts and to powdery mildew) that was conferred by this translocation has made it highly popular among breeders. Commercial wheat cultivars with the *Lr26* gene were introduced in the 1950s and over 400 wheat cultivars that carry the 1BL/1RS translocation have been produced over the years (Kosman et al. 2004). In Argentina, sixteen cultivars between 66 (24%) showed presence of the 1BL/1RS rye translocation (Table 3). Gene postulation studies including control line 'ProINTA Pigué' showed 7 pathotypes with avirulent reaction and 10 with virulent reaction (Table 1). These data would positionate *Lr26* as a moderately useful source of resistance if deployed in combination with complementary *Lr* genes like *Lr19*, *Lr21*, etc. First reports of leaf rust pathotypes virulent for *Lr26* in Argentina come from early nineties, which agree with observed in Kosman et al. (2004) in many locations around the world, however, it is interesting to highlight the high frequency of recent cultivars carrying 1RS/1BL translocation even though leaf rust resistance is broken. This impact appear to have arisen with the high yield and widespread adaptability frequently found in wheat carrying 1RS/1BL translocation. In line with that argument, the still effective resistance to local isolates of stem rust has also promoted its use in breeding programs.

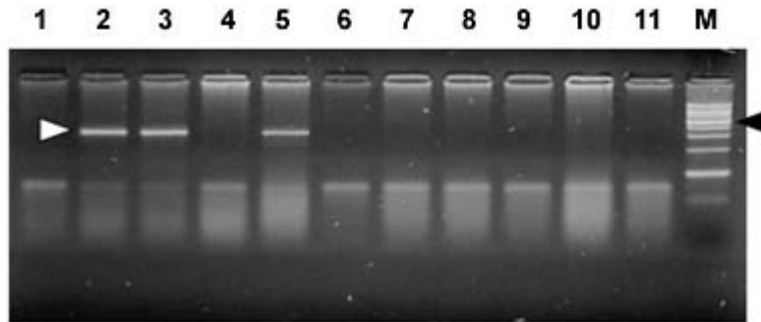


Fig. 2 PCR products obtained from genomic DNAs amplified using J09-1/J09-2 primers. Lanes 1 to 11 are 1- Caudillo, 2- Agent, 3- Buck Malevo, 4- Klein Chajá, 5- Buck Guatimozín, 6- Buck Pingo, 7- Baguette 10, 8- Buck Brasil, 9- SRM Nogal, 10- Buck Arriero, 11- Buck Guapo. M- DNA size standard (100-pb ladder, Biodynamics), 500-bp fragment is indicated with a black arrowhead. The white arrowhead indicates the 350-bp fragment associated with presence of *Lr24*.

The leaf rust resistance gene *Lr47* was transferred from chromosome 7S of *Triticum speltoides* to chromosome 7A of *Triticum aestivum* into a interstitial translocation. PCR analysis using a molecular marker associated with *Lr47* showed presence of this source of resistance only in 'BIOINTA 2004' with no additional cultivars carrying *Lr47* detected in the study. In gene postulation studies all tested pathotypes showed avirulent reaction against *Lr47* at seedling stage (Table 3, Table 4). This source of resistance has not been widely exploited in breeding; however some *Lr47*-isolines from commercial cultivars have been recently released in California and Argentina (Brevis et al. 2008; Bainotti et al. 2009).

Adult plant resistance *Lr* genes detected in cultivars using molecular markers

The *Lr34* gene originates from bread wheat and is located on chromosome arm 7DS. *Lr34* has been recently cloned and it codes a protein that resembles an Adenosine Triphosphate (ATP) binding transporter of the pleiotropic drug resistance subfamily (Krattinger et al. 2009). Lagudah et al. (2006) developed a codominant PCR marker distant 0.5 cM of the *Lr34* locus that we used in our study to detect this gene and ten cultivars amplified the 150-bp fragment associated with *Lr34* (Figure 3, Table 3). This gene has supported resistance to leaf rust in wheat for more than fifty years and is extensively used in breeding programs worldwide (McIntosh et al. 1995; Krattinger et al. 2009).

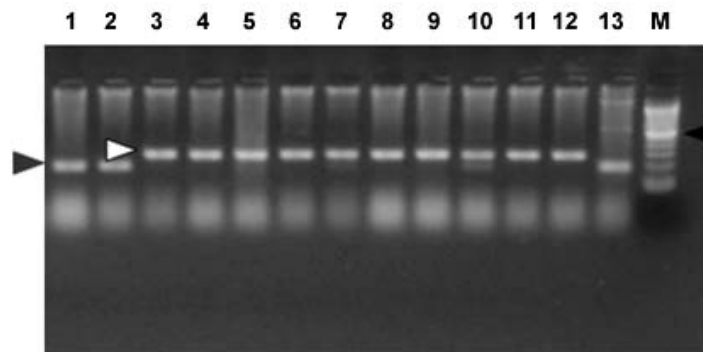


Fig. 3 PCR products obtained genomic DNAs amplified using csLV34F/csLV34R primers. Lanes 1 to 13 are: 1- Lalbahadur (Parula7D), 2- BIOINTA 1003, 3- Buck Glutino, 4- Buck Pingo, 5- Buck Ranquel, 6- Klein Gavilán, 7- ACA304, 8- Themix-L, 9- BIOINTA 1001, 10- Klein Jabalí, 11- BIOINTA 1005, 12- Buck Panadero, 13- INIA Condor. M- DNA size standard (100-pb ladder, Biodynamics), 500-bp fragment is indicated with a black arrowhead. The grey arrowhead indicates the 150-bp fragment associated with presence of *Lr34* and the white arrowhead indicates the 229-bp fragment associated with absence of *Lr34*.

Lr37 is an adult plant leaf rust resistance gene located within a segment of *Triticum ventricosum* (Taush.) Cess. chromosome 2NS translocated to the short arm of bread wheat chromosome 2AS (McIntosh et al. 1995). In agreement with Bulos et al. (2006), two between 66 tested cultivars showed the 285-bp diagnostic DNA fragment associated to *Lr37*. 'Baguette 10' and 'Baguette Premium 11' share European germplasm carrying *Lr37* in their genealogy (for example VPM1) suggesting a common origin of *Lr37*. In contrast with *Lr34* and *Lr35*, *Lr37* has been found susceptible against specific pathotypes at adult plant stage (Chicaiza et al. 2006). Moreover, special consideration must be taken with *Lr37* in breeding programs because even though presence of virulent pathotypes for this gene have been reported, additional genes of agronomic interest like *Yr17*, *Sr38* and *Cre5* are also present into the 2NS *T. ventricosum* segment carrying *Lr37* (Jahier et al. 2001).

DISCUSSION

One of the main disadvantages in using single gene resistance is that because of rapid changes in predominant rust pathogen races (pathotypes) in nature, single-gene resistance in a cultivar may become ineffective soon after it is released. For example, in USA, *Lr9* was initially used in soft winter wheat in the 1970s and initially gave complete immunity to leaf rust. However, within a few years, races with virulence to *Lr9* appeared and soon became widespread in the Easter USA. A similar story suffered *Lr18*, *Lr24* and *Lr26*. Leaf rust races in US with virulence to *Lr41* and *Lr50* were identified even before cultivars with genes were released (Kolmer et al. 2007a). In Argentina we have identified races with virulence to *Lr19*, *Lr26* and *Lr41* in cultivars that originally were resistant to leaf rust, and races with virulence to *Lr51* before a cultivar carrying this gene was released. In this context, stacking two or more effective resistance genes in one background can enhance durability and the level of rust resistance, at least, considering dominant pathotypes in one environment. In line with this argument, Oelke and Kolmer (2004) observed that hard red spring wheat cultivars from USA with seedling resistance genes *Lr16* and *Lr24* with additional adult plant resistance were highly resistant to leaf rust. Kolmer et al. (2007a) consider that the future development of wheat germplasm with high level of resistance will depend on the ability to select genotypes that have combinations of effective resistance genes such as *Lr16* and *Lr23* with the adult plant resistance gene *Lr34*. In our work, nine of the eleven local cultivars with high levels of resistance to all pathotypes showed combinations of the seedling resistance genes that included *Lr16*, which corroborate a central role of this *Lr* gene in the development of germplasm with high level of resistance against leaf rust also in Argentina. Kolmer et al. (2007a) suggest a positive interaction of seedling (*Lr23*) and adult plant (*Lr34*) *Lr* genes with *Lr16* boosting leaf rust resistance in cultivars carrying this combination of *Lr* genes. In highly resistant local cultivars carrying *Lr16* neither *Lr34* nor *Lr23* were detected, suggesting a combination of *Lr* genes different than *Lr16 + Lr23 + Lr34* also associated with high level of resistance. In Argentina, several old cultivars that show durable resistance to leaf rust as Sinvalocho MA, Pergamino Gaboto and Buck Manantial have been identified. In Buck Manantial (released in 1964), Altieri et al. (2008) identified seedling leaf rust resistance genes *Lr3*, *Lr16*, *Lr17*, and an adult plant resistance gene named BMP1. Buck Manantial (Rafaela MAG/Buck Quequen) has been used as a source of resistance to wheat leaf rust not only in Argentina, but also in Uruguay, Centro Internacional de Mejoramiento de Maíz y Trigo (CIMMYT) and North America (Kolmer et al. 2007b), and it could be a possible donor of *Lr16* in local cultivars evaluated in our study. Cultivars carrying *Lr16* like Klein Gavilán (Buck Yapeyu/Klein Cacique) and Klein Jabalí (Klein Orion/Klein Toledo/Klein Cacique) share Klein Cacique (Buck Cimarrón/25348/VEE'S'); and Buck Cimarrón and Buck Manantial share Rafaela MAG, which could be a possible donor of *Lr16* in Buck Manantial, Klein Gavilán and Klein Jabalí. A similar situation can be observed in Buck Guapo and Buck Sureño, sibilines selected from the cross BCHA//Buck Patacón/CRCO, where Buck Patacón (CAEREN 2.4.2/3/RMAG/BPAM//BAGE/KLPET) also has Rafaela MAG in its pedigree as a possible donor of *Lr16*. ACA 302, ACA 303, ACA 304 and ACA 315 are sibilines originated from the cross Buck Poncho/Buck Nandú, unrelated by pedigree with Buck Manantial or Rafaela MAG, suggesting a different origin of *Lr16* in these materials, probably donated by Buck Poncho based on gene postulation data observed in Barcellos et al. (2008). Unfortunately, the probable origin of *Lr16* in Buck Glutino, Themix-L and Buck Ranquel could not be traced because the pedigree of these cultivars is unavailable. The high level of resistance against local pathotypes in BIOINTA 2004 and Buck Mataco was due to combinations of seedling resistance genes not including *Lr16*, like *Lr47* and *Lr3a+Lr10+Lr17+u*, respectively. Adult plant resistant gene *Lr34* has also been detected in BIOINTA 2004 (Bainotti et al. 2009), moreover, it is likely that BIOINTA 2004 also had additional seedling or adult plant resistant gene not detected because of limiting factors in gene postulation (lack of virulent pathotypes to *Lr* gene isolates to perform the postulation, in this case *Lr47*, and limited number of *Lr* gene isolates evaluated), and in the number of *Lr* genes available with diagnostic markers. Presence of unknown additional seedling resistance genes has also been

observed in a high number of local cultivars (64%, Table 3). In the eleven highly resistant cultivars identified in our study, gene postulation analysis showed nine cases with presence of additional unknown seedling resistance genes, suggesting effective combinations of between two and four (or more) seedling *Lr* genes, probably with additional adult plant *Lr* genes different from *Lr34*, *Lr35* and *Lr37*, not present in these cultivars (Table 4). In cultivars postulated to have unknown *Lr* genes, genetic analysis of segregating populations remains the best method to determine the genetic basis of seedling and adult plant resistance of a cultivar. This approach has been successfully used to isolate novel sources of leaf rust resistance in local germplasm like an adult plant leaf rust resistant gene detected in 3BS chromosome arm of the cultivar Sinvalocho named SV2 (Ingala et al. 2007). Kolmer et al. (2007a) used a similar approach to determine the genetics of leaf rust resistance in three landrace-derived wheat cultivars from Uruguay based on segregation and infection type data and four unknown seedling (2) and adult plant (2) *Lr* genes were detected.

In this context, gene pyramiding of effective *Lr* genes is probably the faster strategy to develop leaf rust resistant wheat cultivars. Gene pyramiding can be greatly facilitated with associated markers through marker assisted selection programs (MAS), this is particularly true in the field of wheat breeding for leaf rust resistance where PCR-based markers are already available for almost half of the 60 or more designated resistance genes and alleles (Samsampour et al. 2010). For example, MAS has been used successfully to introgress into adapted germplasm from Hungary gene combinations *Lr9* + *Lr24*, *Lr9* + *Lr25* and *Lr9* + *Lr29* (Vida et al. 2009). Our gene postulation data showed four seedling *Lr* genes (*Lr21*, *Lr25*, *Lr29*, *Lr47*) with high levels of resistance against local leaf rust pathotypes and with molecular markers available for MAS (Table 1, Table 2). Additionally, a second group of seedling *Lr* genes (*Lr2a*, *Lr2c*, *Lr9*, *Lr19*, *Lr41*, *Lr51*, and particularly, *Lr16*) showed good levels of resistance against a high number of local pathotypes in such a way that cultivars with combinations of complementary *Lr* genes could show high levels of resistance against leaf rust. In this group some *Lr* genes have molecular markers suitable for MAS, like *Lr9* (Schachermayr et al. 1994; Gupta et al. 2005), *Lr19* (Prins et al. 2001; Gupta et al. 2006), *Lr51* (Helguera et al. 2005), *Lr16* (McCartney et al. 2005) and *Lr41* (Sun et al. 2009). Unfortunately, to our knowledge, no markers suitable for MAS associated with *Lr2a* or *Lr2c* have been published to the date. Other seedling resistance *Lr* genes with molecular markers suitable for MAS that have not been evaluated with local pathotypes but could be useful in the development of highly resistant germplasm based on new combinations of *Lr* genes are *Lr53* (Dadkhodaie et al. 2010), *Lr56* (Marais et al. 2010a), *Lr57* (Kuraparthi et al. 2009), *Lr59* (Marais et al. 2008), *Lr62* (Marais et al. 2009), *Lr63* (Kolmer et al. 2010) and *Lr66* (Marais et al. 2010b). However a special care must be taken when using in MAS the last group of *Lr* genes, because in all cases they were transferred into wheat in the form of wheat-alien translocations that may have an agronomic penalty because of the linkage drag (Helguera et al. 2003). Finally, a third group of *Lr* genes which is considered critical in the development of durable and highly resistant germplasm are the adult plant resistance *Lr* genes also known as slow-rusting, or partial resistance genes (Kou and Wang, 2010). In our study, the identification of adult plant resistant genes *Lr34*, *Lr35* and *Lr37* was performed using molecular markers also suitable for MAS. In the case of *Lr34*, Lagudah et al. (2009) reported gene-specific markers that were not tested in our study, therefore, future analyses should be done with local germplasm using these functional markers in order to confirm presence of *Lr34*. Additional adult plant resistance *Lr* genes with associated markers suitable for MAS are SV2 (Ingala et al. 2007), *Lr22a* (Hiebert et al. 2007), *Lr12* (Singh and Bowden, 2010), *Lr46* (Mateos-Hernandez et al. 2006), *Lr48* (Singh et al. 2010) and *Lr67* (Herrera-Foessel et al. 2011).

Lowe et al. (2011) consider that with the number of mapped partial (slow rusting) rust resistance genes increasing rapidly as a result of ongoing advances in marker and sequencing technologies, breeding programs needing to select and prioritize genes for deployment confront a fundamental question: which genes or gene combinations are more likely to provide durable protection against these evolving pathogens? These authors argue that a refined classification of partial rust resistance genes is required to start answering this question, one based not merely on disease phenotype but also on gene cloning, molecular functional characterization, and interactions with other host and pathogen proteins. Our phenotypic data would support that ideally, multiple minor, adult plant resistance and major seedling resistance genes should be combined to optimize both the level of resistance and its durability in a wheat cultivar. Using this strategy it will be possible to capitalize the two ways that plants respond to pathogen infection: basal resistance (mediated mainly by minor, adult plant resistance genes) and race-specific resistance (mediated by major, seedling resistance genes). Still, a rigorous evaluation of the agronomic effect of new resistance gene combinations on a host phenotype will be required to discard an eventual decrease in host fitness.

Financial support: Grants from the Government of Argentina, INTA.

REFERENCES

- ALTIERI, E.; MCCALLUM, B.; SOMERS, D.J. and SACCO, F. (2008). Inheritance and genetic mapping of leaf rust resistance genes in the wheat cultivar Buck Manantial. In: *11th International Wheat Genetics Symposium 2008 Proceedings*. (24th - 29th August, 2008, Brisbane, Australia). APPELS, R.; EASTWOOD, R.; LAGUDAH E.; LANGRIDGE, P.; MACKAY, M.; MCINTYRE, L. and SHARP, P. eds. vol. 3, p. 830-833.
- BAINOTTI, C.T.; FRASCHINA, J.; SALINES, J.; NISI, J.; DUBCOVSKY, J.; LEWIS, S.; BULLRICH, L.; VANZETTI, L.S.; CUNIBERTI, M.; CAMPOS, P.; FORMICA, M.B.; MASIERO, B.; ALBERIONE, E. and HELGUERA, M. (2009). Registration of 'BIOINTA 2004' wheat. *Journal of Plant Registrations*, vol. 3, no. 2, p. 165-169. [\[CrossRef\]](#)
- BANSAL, U.K.; HAYDEN, M.J.; VENKATA, B.P.; KHANNA, R.; SAINI, R.G. and BARIANA, H. S. (2008). Genetic mapping of adult plant leaf rust resistance genes *Lr48* and *Lr49* in common wheat. *TAG Theoretical and Applied Genetics*, vol. 117, no. 3, p. 307-312. [\[CrossRef\]](#)
- BARCELLOS, R.S.; MCCALLUM, B. and BRULE-BABEL, A. (2008). Postulation of leaf rust resistance genes in South American wheat cultivars. In: *University of Manitoba, Agronomist Conference Proceedings (9th-10th December, 2008 Manitoba, Canada)*. Poster 14.
- BREVIS, J.C.; CHICAIZA, O.; KHAN, I.A.; JACKSON, L.; MORRIS, C.F. and DUBCOVSKY, J. (2008). Agronomic and quality evaluation of common wheat near-isogenic lines carrying the leaf rust resistance gene *Lr47*. *Crop Science*, vol. 48, no. 4, p. 1441-1451. [\[CrossRef\]](#)
- BULOS, M.; ECHARTE, M. and SALA, C. (2006). Occurrence of the rust resistance gene *Lr37* from *Aegilops ventricosa* in Argentine cultivars of wheat. *Electronic Journal of Biotechnology*, vol. 9, no. 5. [\[CrossRef\]](#)
- CHICAIZA, O.; KHAN, I.A.; ZHANG, X.; BREVIS, J.C.; JACKSON, L.; CHEN, X. and DUBCOVSKY, J. (2006). Registration of five wheat isogenic lines for leaf rust and stripe rust resistance genes. *Crop Science*, vol. 46, no. 1, p. 485-487. [\[CrossRef\]](#)
- DADKHODAIE, N.A.; KARAOGLOU, H.; WELLINGS, C.R. and PARK, R.F. (2010). Mapping genes *Lr53* and *Yr35* on the short arm of chromosome 6B of common wheat with microsatellite markers and studies of their association with *Lr36*. *TAG Theoretical and Applied Genetics*, vol. 122, no. 3, p. 479-487. [\[CrossRef\]](#)
- FEUILLET, C.; TRAVELLA, S.; STEIN, N.; ALBAR, L.; NUBLAT, A. and KELLER, B. (2003). Map-based isolation of the leaf rust disease resistance gene *Lr10* from the hexaploid wheat (*Triticum aestivum* L.) genome. *Proceedings of the National Academy of Sciences of the United States of America*, vol. 100, no. 25, p. 15253-15258. [\[CrossRef\]](#)
- GERMÁN, S.; BARCELLOS, A.; CHAVES, M.; KOHLI, M.; CAMPOS, P. and VIEDMA, L. (2007). The situation of common wheat rusts in the Southern Cone of America and perspectives for control. *Australian Journal of Agricultural Research*, vol. 58, no. 6, p. 620-630. [\[CrossRef\]](#)
- GOLD, J.; HARDER, D.; TOWNLEY-SMITH, F.; AUNG T. and PROCUNIER, J. (1999). Development of a molecular marker for rust resistance genes *Sr39* and *Lr35* in wheat breeding lines. *Electronic Journal of Biotechnology*, vol. 2, no. 1.
- GUPTA, S.K.; CHARPE, A.; KOUL, S.; PRABHU, K.V. and HAQ, Q.M.R. (2005). Development and validation of molecular markers linked to an *Aegilops umbellulata*-derived leaf rust-resistance gene, *Lr9*, for marker-assisted selection in bread wheat. *Genome*, vol. 48, no. 5, p. 823-830. [\[CrossRef\]](#)
- GUPTA, S.K.; CHARPE, A.; PRABHU, K.V. and HAQUE, Q.M.R. (2006). Identification and validation of molecular markers linked to the leaf rust resistance gene *Lr19* in wheat. *TAG Theoretical and Applied Genetics*, vol. 113, no. 6, p. 1027-1036. [\[CrossRef\]](#)
- HELGUERA, M.; KHAN, I.A. and DUBCOVSKY, J. (2000). Development of PCR markers for wheat leaf rust resistance gene *Lr47*. *TAG Theoretical and Applied Genetics*, vol. 100, no. 7, p. 1137-1143. [\[CrossRef\]](#)
- HELGUERA, M.; KHAN, I.A.; KOLMER, J.; LIJAVETZKI, D.; ZHONG-QI, L. and DUBCOVSKY, J. (2003). PCR assays for the *Lr37-Yr17-Sr38* cluster of rust resistance genes and their use to develop isogenic hard red spring wheat lines. *Crop Science*, vol. 43, no. 5, p. 1839-1847. [\[CrossRef\]](#)
- HELGUERA, M.; VANZETTI, L.; SORIA, M.; KHAN, I.A.; KOLMER, J. and DUBCOVSKY, J. (2005). PCR markers for *Triticum speltoides* leaf rust resistance gene *Lr51* and their use to develop isogenic hard red spring wheat lines. *Crop Science*, vol. 45, no. 2, p. 728-734. [\[CrossRef\]](#)
- HERRERA-FOESSEL, S.A.; LAGUDAH, E.S.; HUERTA-ESPINO, J.; HAYDEN, M.J.; BARIANA, H.S.; SINGH, D. and SINGH, R.P. (2011). New slow-rusting leaf rust and stripe rust resistance genes *Lr67* and *Yr46* in wheat are pleiotropic or closely linked. *TAG Theoretical and Applied Genetics*, vol. 122, no. 1, p. 239-249. [\[CrossRef\]](#)
- HIEBERT, C.W.; THOMAS, J.B.; SOMERS, D.J.; MCCALLUM, B.D. and FOX, S.L. (2007). Microsatellite mapping of adult-plant leaf rust resistance gene *Lr22a* in wheat. *TAG Theoretical and Applied Genetics*, vol. 115, no. 6, p. 877-884. [\[CrossRef\]](#)
- HUANG, L. and GILL, B.S. (2001). An RGA-like marker detects all known *Lr21* leaf rust resistance gene family members in *Aegilops tauschii* and wheat. *TAG Theoretical and Applied Genetics*, vol. 103, no. 6-7, p. 1007-1013. [\[CrossRef\]](#)
- HYSING, S.; SINGH, R.P.; HUERTA-ESPINO, J.; MERKER, A.; LILJEROTH, E. and DIAZ, O. (2006). Leaf rust (*Puccinia triticina*) resistance in wheat (*Triticum aestivum*) cultivars grown in Northern Europe 1992-2002. *Hereditas*, vol. 143, no. 1, p. 1-14. [\[CrossRef\]](#)
- INGALA, L.; SAIONE, H.; HELGUERA, M.; NISI, M. and SACCO, F. (2007). Inheritance of adult plant resistance genes and associated markers from a durable resistant cultivar to leaf rust. In: BUCK, H.T.; NISI, J.E. and

- SALOMÓN, N. eds. *Wheat Production in Stressed Environments*. Dordrecht, Springer, vol. 12, p. 59-63. [\[CrossRef\]](#)
- JAHIER, J.; ABELARD, P.; TANGUY, A.M.; DEDRYVER, F.; RIVOAL, R.; KHATKAR, S.; BARIANA, H.S. and KOEBNER, R. (2001). The *Aegilops ventricosa* segment on chromosome 2AS of the wheat cultivar VPM1 carries the cereal cyst nematode resistance gene *Cre5*. *Plant Breeding*, vol. 120, no. 2, p. 125-128. [\[CrossRef\]](#)
- JOHNSON, R. (2000). Classical plant breeding for durable resistance to diseases. *Journal of Plant Pathology*, vol. 82, no. 1, p. 3-7.
- KOLMER, J.A. (2003). Postulation of leaf rust resistance genes in selected soft red winter wheats. *Crop science*, vol. 43, no. 4, p. 1266-1274. [\[CrossRef\]](#)
- KOLMER, J.A.; JIN, Y. and LONG, D.L. (2007a). Wheat leaf and stem rust in the United States. *Australian Journal of Agricultural Research*, vol. 58, no. 6, p. 631-638. [\[CrossRef\]](#)
- KOLMER, J.A.; OELKE, L.M. and LIU, J.Q. (2007b). Genetics of leaf rust resistance in three Americano landrace-derived wheat cultivars from Uruguay. *Plant Breeding*, vol. 126, no. 2, p. 152-157. [\[CrossRef\]](#)
- KOLMER, J.A.; ANDERSON, J.A. and FLOR, J.M. (2010). Chromosome location, linkage with simple sequence repeat markers, and leaf rust resistance conditioned by gene *Lr63* in wheat. *Crop Science*, vol. 50, no. 6, p. 2392-2395. [\[CrossRef\]](#)
- KOSMAN, E.; PARDES, E.; ANIKSTER, Y.; MANISTERSKI, J.; YEHUDA, P.B.; SZABO, L.J. and SHARON, A. (2004). Genetic variation and virulence on *Lr26* in *Puccinia triticina*. *Phytopathology*, vol. 94, no. 6, p. 632-640. [\[CrossRef\]](#)
- KOU, Y. and WANG, S. (2010). Broad-spectrum and durability: Understanding of quantitative disease resistance. *Current Opinion in Plant Biology*, vol. 13, no. 2, p. 181-185. [\[CrossRef\]](#)
- KRATTINGER, S.G.; LAGUDAH, E.S.; SPIELMEYER, W.; SINGH, R.P.; HUERTA-ESPINO, J.; MCFADDEN, H.; BOSSOLINI, E.; SELTER, L.L. and KELLER, B. (2009). A putative ABC transporter confers durable resistance to multiple fungal pathogens in wheat. *Science*, vol. 323, no. 5919, p. 1360-1363. [\[CrossRef\]](#)
- KURAPARTHY, V.; SOOD, S.; SEE, D.R. and GILL, B.S. (2009). Development of a PCR assay and marker-assisted transfer of leaf rust and stripe rust resistance genes *Lr57* and *Yr40* into hard red winter wheats. *Crop Science*, vol. 49, no. 1, p. 120-126. [\[CrossRef\]](#)
- LAGUDAH, E.S.; MCFADDEN, H.; SINGH, R.P.; HUERTA-ESPINO, J.; BARIANA, H.S. and SPIELMEYER, W. (2006). Molecular genetic characterisation of the *Lr34/Yr18* slow rusting resistance gene region in wheat. *TAG Theoretical and Applied Genetics*, vol. 114, no. 1, p. 21-30. [\[CrossRef\]](#)
- LAGUDAH, E.S.; KRATTINGER, S.G.; HERRERA-FOESSEL, S.; SINGH, R.P.; HUERTA-ESPINO, J.; SPIELMEYER, W.; BROWN-GUEDIRA, G.; SELTER, L.L. and KELLER, B. (2009). Gene-specific markers for the wheat gene *Lr34/Yr18/Pm38* which confers resistance to multiple fungal pathogens. *TAG Theoretical and Applied Genetics*, vol. 119, no. 5, p. 889-898. [\[CrossRef\]](#)
- LONG, D.L. and KOLMER, J.A. (1989). A North American system of nomenclature for *Puccinia recondita* f. sp. *tritici*. *Phytopathology*, vol. 79, no. 5, p. 525-529. [\[CrossRef\]](#)
- LOWE, I.; CANTU, D. and DUBCOVSKY, J. (2011). Durable resistance to the wheat rusts: Integrating systems biology and traditional phenotype-based research methods to guide the deployment of resistance genes. *Euphytica*, vol. 179, no. 1, p. 69-79. [\[CrossRef\]](#)
- MAGO, R.; SPIELMEYER, W.; LAWRENCE, G.J.; LAGUDAH, E.S.; ELLIS, J.G. and PRYOR, A. (2002). Identification and mapping of molecular markers linked to rust resistance genes located on chromosome 1RS of rye using wheat-rye translocation lines. *TAG Theoretical and Applied Genetics*, vol. 104, no. 8, p. 1317-1324. [\[CrossRef\]](#)
- MARAIS, G.F.; MCCALLUM, B. and MARAIS, A.S. (2008). Wheat leaf rust resistance gene *Lr59* derived from *Aegilops peregrina*. *Plant Breeding*, vol. 127, no. 4, p. 340-345. [\[CrossRef\]](#)
- MARAIS, F.; MARAIS, A.; MCCALLUM, B. and PRETORIUS, Z. (2009). Transfer of leaf rust and stripe rust resistance genes *Lr62* and *Yr42* from *Aegilops neglecta* Req. ex Bertol. to common wheat. *Crop Science*, vol. 49, no. 3, p. 871-879. [\[CrossRef\]](#)
- MARAIS, G.F.; BADENHORST, P.E.; EKSTEEN, A. and PRETORIUS, Z.A. (2010a). Reduction of *Aegilops sharonensis* chromatin associated with resistance genes *Lr56* and *Yr38* in wheat. *Euphytica*, vol. 171, no. 1, p. 15-22. [\[CrossRef\]](#)
- MARAIS, G.F.; BEKKER, T.A.; EKSTEEN, A.; MCCALLUM, B.; FETCH, T. and MARAIS, A.S. (2010b). Attempts to remove gametocidal genes co-transferred to common wheat with rust resistance from *Aegilops speltoides*. *Euphytica*, vol. 171, no. 1, p. 71-85. [\[CrossRef\]](#)
- MATEOS-HERNANDEZ, M.; SINGH, R.P.; HULBERT, S.H.; BOWDEN, R.L.; HUERTA-ESPINO, J.; GILL, B.S. and BROWN-GUEDIRA, G. (2006). Targeted mapping of ESTs linked to the adult plant resistance gene *Lr46* in wheat using synteny with rice. *Functional & Integrative Genomics*, vol. 6, no. 2, p. 122-131. [\[CrossRef\]](#)
- MCCARTNEY, C.A.; SOMERS, D.J.; MCCALLUM, B.D.; THOMAS, J.; HUMPHREYS, D.G.; MENZIES, J.G. and BROWN, P.D. (2005). Microsatellite tagging of the leaf rust resistance gene *Lr16* on wheat chromosome 2BSc. *Molecular Breeding*, vol. 15, no. 4, p. 329-337. [\[CrossRef\]](#)
- MCINTOSH, R.A.; WELLINGS, C.R. and PARK, R.F. (1995). *Wheat rusts: An atlas of resistance genes*, Melbourne, CSIRO, 1995, 208 p. ISBN 0-643-05428-6.
- MCINTOSH, R.A.; DEVOS, K.M.; DUBCOVSKY, J.; ROGERS, W.J.; MORRIS, C.F.; APPELS, R.; SOMERS, D.J. and ANDERSON, O.A. (2008). Catalogue of gene symbols for wheat: 2008 Supplement. *Annual Wheat Newsletter*, vol. 54, p. 219. Available from Internet: <http://wheat.pw.usda.gov/ggpages/wgc/2008upd.pdf>. [cited date March 15, 2011].
- MEBRATE, S.A.; OERKE, E.C.; DEHNE, H.W. and PILLEN, K. (2008). Mapping of the leaf rust resistance gene *Lr38* on wheat chromosome arm 6DL using SSR markers. *Euphytica*, vol. 162, no. 3, p. 457-466. [\[CrossRef\]](#)

- MESSMER, M.M.; SEYFARTH, R.; KELLER, M.; SCHACHERMAYR, G.; WINZELER, M.; ZANETTI, S.; FEUILLET, C. and KELLER, B. (2000). Genetic analysis of durable leaf rust resistance in winter wheat. *TAG Theoretical and Applied Genetics*, vol. 100, no. 3-4, p. 419-431. [\[CrossRef\]](#)
- NEU, C.; STEIN, N. and KELLER, B. (2002). Genetic mapping of the *Lr20-Pm1* resistance locus reveals suppressed recombination on chromosome arm 7AL in hexaploid wheat. *Genome*, vol. 45, no. 4, p. 737-744. [\[CrossRef\]](#)
- OELKE, L.M. and KOLMER, J.A. (2004). Characterization of leaf rust resistance in hard red spring wheat cultivars. *Plant Disease*, vol. 88, no. 10, p. 1127-1133. [\[CrossRef\]](#)
- PRABHU, K.V.; GUPTA, S.K.; CHARPE, A. and KOUL, S. (2004). SCAR marker tagged to the alien leaf rust resistance gene *Lr19* uniquely marking the *Agropyron elongatum*-derived gene *Lr24* in wheat: A revision. *Plant Breeding*, vol. 123, no. 5, p. 417-420. [\[CrossRef\]](#)
- PRINS, R.; GROENEWALD, J.Z.; MARAIS, G.F.; SNAPE, J.W. and KOEBNER, R.M.D. (2001). AFLP and STS tagging of *Lr19*, a gene conferring resistance to leaf rust in wheat. *TAG Theoretical and Applied Genetics*, vol. 103, no. 4, p. 618-624. [\[CrossRef\]](#)
- PROCUNIER, J.D.; TOWNLEY-SMITH, T.F.; PRASHAR, S.; GRAY, M.; KIM, W.K.; CZAMECKI, E. and DYCK, P.L. (1995). PCR-based RAPD/DGGE markers linked to leaf rust resistance genes *Lr29* and *Lr25* in wheat (*Triticum aestivum* L.). *Journal of Genetics and Breeding*, vol. 49, no. 1, p. 87-92.
- SAMSAMPOUR, D.; MALEKI ZANJANI, B.; PALLAVI, J.K.; SINGH, A.; CHARPE, A.; GUPTA, S.K. and PRABHU, K.V. (2010). Identification of molecular markers linked to adult plant leaf rust resistance gene *Lr48* in wheat and detection of *Lr48* in the Thatcher near-isogenic line with gene *Lr25*. *Euphytica*, vol. 174, no. 3, p. 337-342. [\[CrossRef\]](#)
- SCHACHERMAYR, G.; SIEDLER, H.; GALE, M.D.; WINZELER, H.; WINZELER, M. and KELLER, B. (1994). Identification and localization of molecular markers linked to the *Lr9* leaf rust resistance gene of wheat. *TAG Theoretical and Applied Genetics*, vol. 88, no. 1, p. 110-115. [\[CrossRef\]](#)
- SCHACHERMAYR, G.; MESSMER, M.M.; FEUILLET, C.; WINZELER, H.; WINZELER, M. and KELLER, B. (1995). Identification of molecular markers linked to the *Agropyron elongatum*-derived leaf rust resistance gene *Lr24* in wheat. *TAG Theoretical and Applied Genetics*, vol. 90, no. 7-8, p. 982-990. [\[CrossRef\]](#)
- SCHACHERMAYR, G.; FEUILLET, C. and KELLER, B. (1997). Molecular markers for the detection of the wheat leaf rust resistance gene *Lr10* in diverse genetic backgrounds. *Molecular Breeding*, vol. 3, no. 1, p. 65-74. [\[CrossRef\]](#)
- SCHNURBUSCH, T.; BOSSOLINI, E.; MESSMER, M. and KELLER, B. (2004). Tagging and validation of a major quantitative trait locus for leaf rust resistance and leaf tip necrosis in winter wheat cultivar forno. *Phytopathology*, vol. 94, no. 10, p. 1036-1041. [\[CrossRef\]](#)
- SINGH, S. and BOWDEN, R.L. (2010). Molecular mapping of adult-plant race-specific leaf rust resistance gene *Lr12* in bread wheat. *Molecular Breeding*, on line first. [\[CrossRef\]](#)
- SINGH, A.; PALLAVI, J.K.; GUPTA, P. and PRABHU, K.V. (2011). Identification of microsatellite markers linked to leaf rust adult plant resistance (APR) gene *Lr48* in wheat. *Plant Breeding*, vol. 130, no. 1, p. 31-34. [\[CrossRef\]](#)
- STAKMAN, E.C.; STEWART, D.M. and LOEGERING, W.Q. (1962). Identification of physiologic races of *Puccinia graminis* var: *tritici*. USDA-ARS Bull. E-167, Washington DC, USDA eds, 1962, 53 p.
- SUN, X.; BAI, G. and CARVER, B.F. (2009). Molecular markers for wheat leaf rust resistance gene *Lr41*. *Molecular Breeding*, vol. 23, no. 2, p. 311-321. [\[CrossRef\]](#)
- URBANOVICH, O.Y.; MALYSHEV, S.V.; DOLMATOVICH, T.V. and KARTEL, N.A. (2006). Identification of leaf rust resistance genes in wheat (*Triticum aestivum* L.) cultivars using molecular markers. *Russian Journal of Genetics*, vol. 42, no. 5, p. 546-554. [\[CrossRef\]](#)
- VIDA, G.; GÁL, M.; UHRIN, A.; VEISZ, O.; HASAN SYED, N.; FLAVELL, A.J.; WANG, Z. and BEDÒ, Z. (2009). Molecular markers for the identification of resistance genes and marker-assisted selection in breeding wheat for leaf rust resistance. *Euphytica*, vol. 170, no. 1-2, p. 67-76. [\[CrossRef\]](#)
- WAMISHE, Y.A. and MILUS, E.A. (2004). Genes for adult-plant resistance to leaf rust in soft red winter wheat. *Plant Disease*, vol. 88, no. 10, p. 1107-1114. [\[CrossRef\]](#)
- ZHANG, W.; LUKASZEWSKI, A.J.; KOLMER, J.; SORIA, M.A.; GOYAL, S. and DUBCOVSKY, J. (2005). Molecular characterization of durum and common wheat recombinant lines carrying leaf rust resistance (*Lr19*) and yellow pigment (Y) genes from *Lophopyrum ponticum*. *TAG Theoretical and Applied Genetics*, vol. 111, no. 3, p. 573-582. [\[CrossRef\]](#)

How to reference this article:

VANZETTI, L.S.; CAMPOS, P.; DEMICHELIS, M.; LOMBARDO, L.A.; AURELIA, P.R.; VASCHETTO, L.M.; BAINOTTI, C.T. and HELGUERA, M. (2011). Identification of leaf rust resistance genes in selected Argentinean bread wheat cultivars by gene postulation and molecular markers. *Electronic Journal of Biotechnology*, vol. 14, no. 3. <http://dx.doi.org/10.2225/vol14-issue3-fulltext-14>